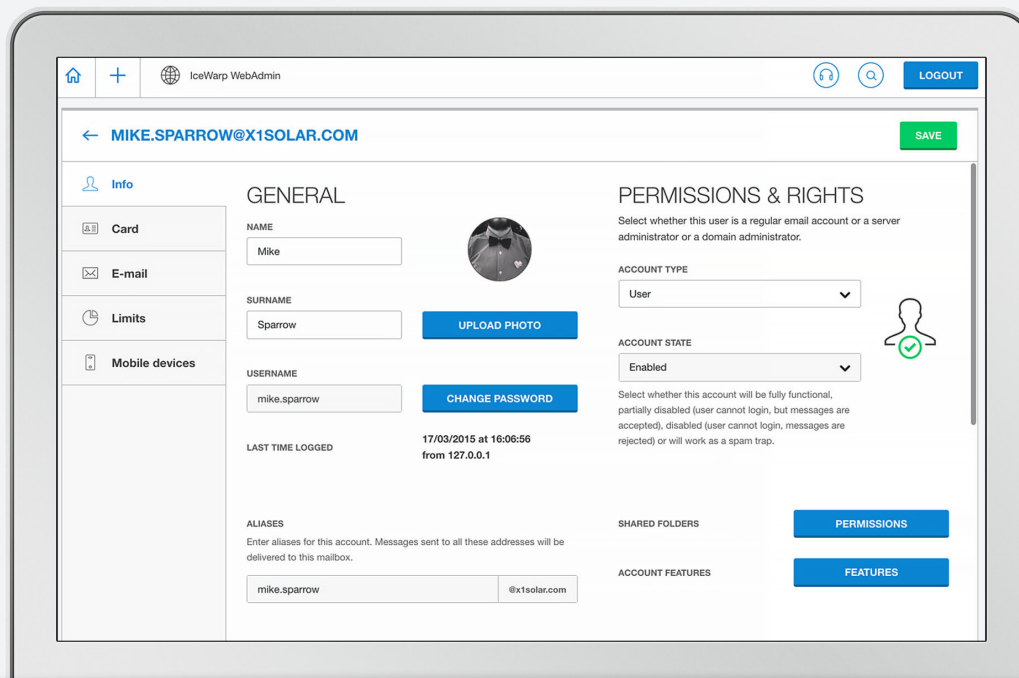


## IceWarp 11.2

### új HTML5 alapú WebAdmin felülettel

Az új WebAdmin felülettel a napi adminisztrációs munkát bárholonnan végezheti. Domének, felhasználók, csoportok és levelezési listák beállításait tetszőlegesen módosíthatja egyszerű webes felületről, számítógépéről, mobil eszközéről vagy akár okostelefonjával is.

A megújult szerver áthelyezővel a hardvercserét is jelentősen megkönnyítettük. Segítékével a teljes installáció egyszerűen és megbízhatóan áthelyezhető egy új hardverre vagy akár az új IceWarp felhőbe.

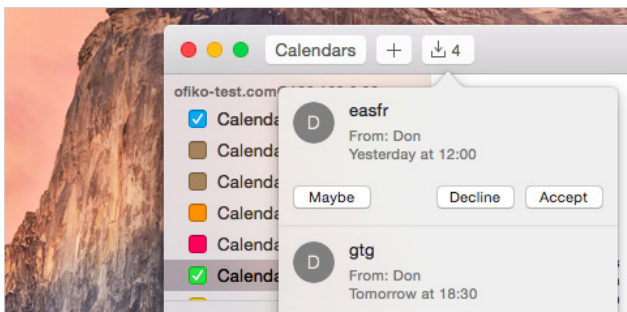


## Explore New HTML5 WebAdmin

WebAdmin comes in a beautiful modern design. Its layout automatically adapts to the device type - whether it is a desktop computer, a tablet, or a smartphone. Redesigned from the ground up, it is based on HTML5 and a whole new WebIQ framework. The new WebAdmin will be rolled out in several stages.

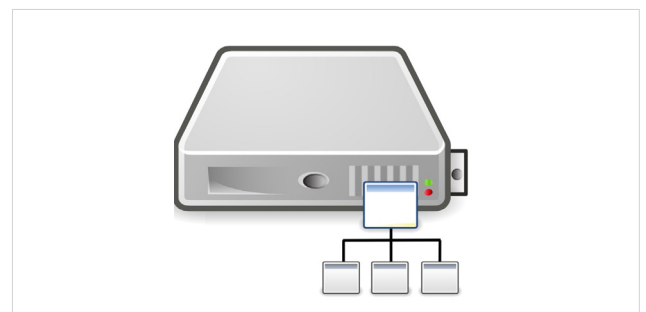
The current version fully covers **the domain administrator's agenda** - creating and configuring user accounts, groups and mailing lists.

**Server management** will come in the next release in August 2015. Until then, the old PHP webadmin is still available.



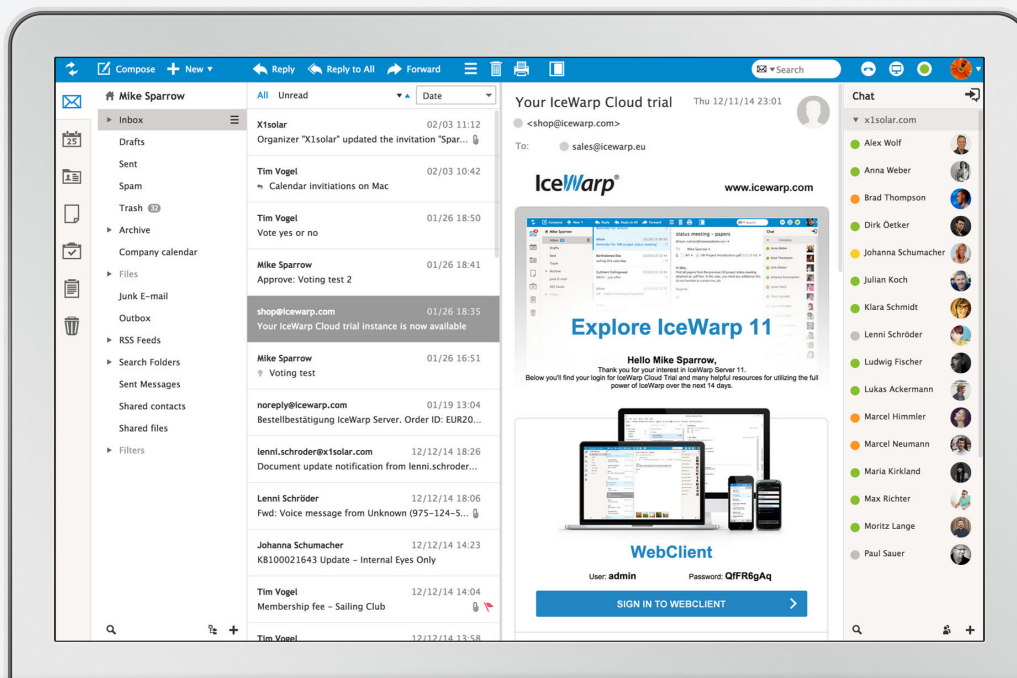
## Auto Event Generation

Event invitations are now automatically created in attendee's calendar in addition to sending the iMIP email. This modern protocol extension restores compatibility with the Calendar in OS X 10.10 Yosemite.



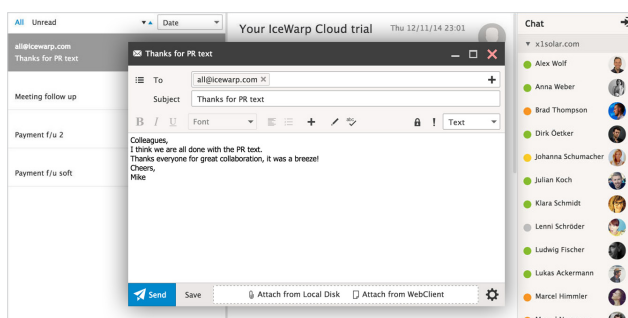
## Active Directory/LDAP

Possibility to convert LDAP synced user to local one. LDAP access directives added for security. Support for userPassword attribute to change password in OpenLDAP. Selector for Active Directory / General LDAP server added to console.



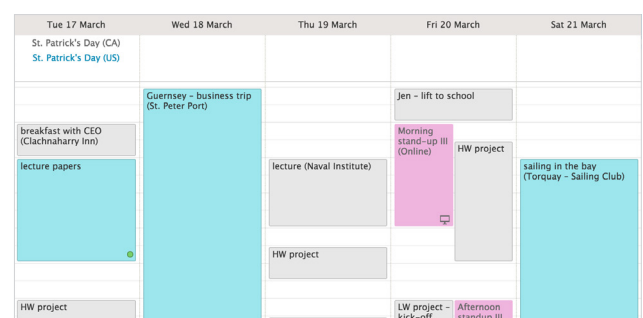
## WebClient Visual Improvements

Subtle improvements to WebClient's look & feel make the interface more fluid and easier on the eyes. We have also implemented a few modern visual changes like circular contact photos.



## Email Templates

Create templates for messages you frequently send and organize them in a special folder. Use the templates not only to compose new messages, but also when replying or replying to all.



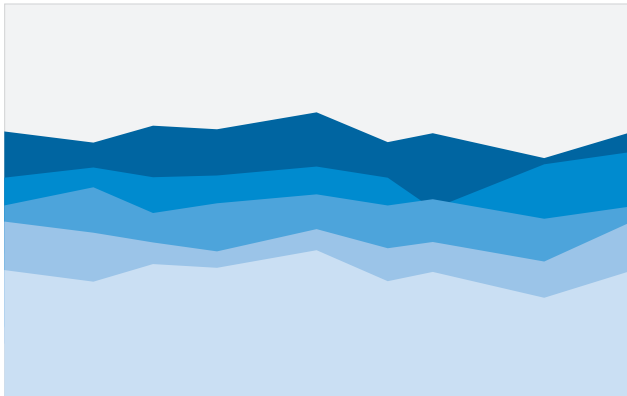
## More Calendar Colors

Users with many calendars can tell the difference by gray, lemon or white colored events. Added are also aqua, aquamarine, orchid, pink and silver. Colors are picked by the server so that no color is duplicated.

31%

## Remaining Message Size

Emails have limited size, but often you only realize this after trying to send the message. A new visual indicator tells you how much of the total message size limit is currently used by text and attachments.



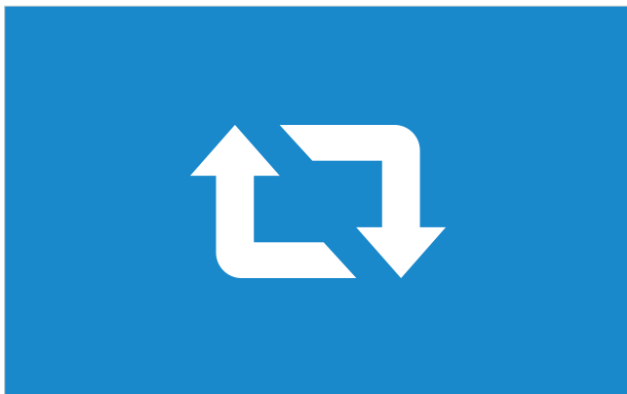
## Pool Management

Messages going to one domain are aggregated and sent together, which also allows for throttling the sending/receiving speed. Internal outgoing queues are sorted by Priority (0-4) with different sending speeds.



## Soft Quota

If this feature is enabled, the behavior of a mailbox quota is changed. When quota is exceeded, the user can still receive email as before, but each attempt to send email will fail and will be logged as permanent error.



## IceWarp To IceWarp Migrator

Available from the console or as a standalone tool, the new IceWarp to IceWarp migrator fills the gap in the manual process of backup and restore and makes it much less prone to errors. A comprehensive detection process guides the migration and informs administrator about any external programs (libraries, filters) that do not come as standard and need to be moved separately.



## Exchange Migrator

Exchange Migrator is developed continually and independently on IceWarp Server releases and many improvements are made each month. One notable recent milestone is official support for Exchange 2013.

## Easier Setup

Installing IceWarp for Linux is faster and smarter. Downgrade detection ensures that a warning will be displayed when attempting to install an older version or a build with a different architecture.

## Remote Console Installer

The new installer prevents issues with incorrect remote console versions. Auto update and version checking allows you to download and install the right console version according to the server you are connecting to.



## Anti-Virus Extension Filters

The processing of extension filters has been redesigned to work similar to rules. It is now possible to match an arbitrary filename mask, match files within archives, and independently accept/reject them.



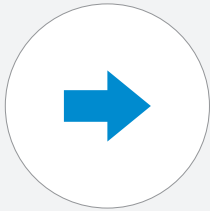
## Per-Domain Anti-Spam

Spam thresholds can be set separately for recipients in one domain and override global Anti-Spam thresholds. This is useful in environments where spam policies or user requirements differ by domain.



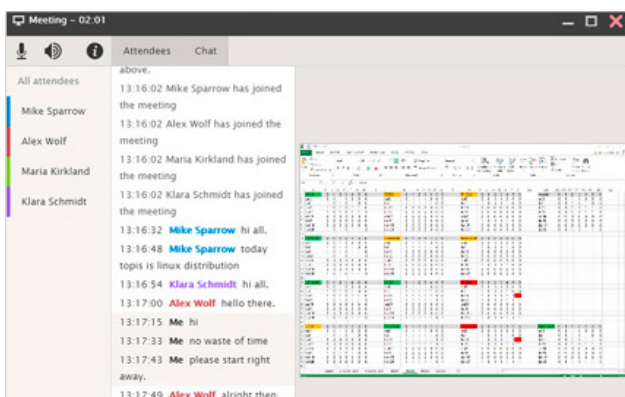
## Whole Word Only

Whitelist, Blacklist, Rules and Filters searches that match keywords you define now have a "Whole word only" search modifier to look for entire words and not part a word.



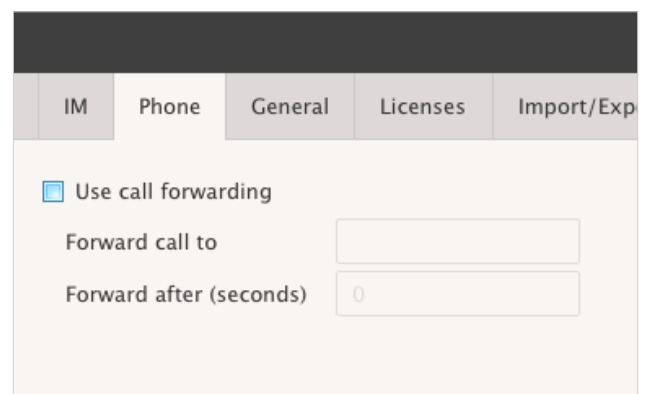
## Do Not Forward Spam

A new option has been added to forwarder which prevents spam messages being automatically forwarded from the mailbox. User-defined email forwarding settings can be forced to keep emails in the mailbox.



## Conferencing & Screen Sharing

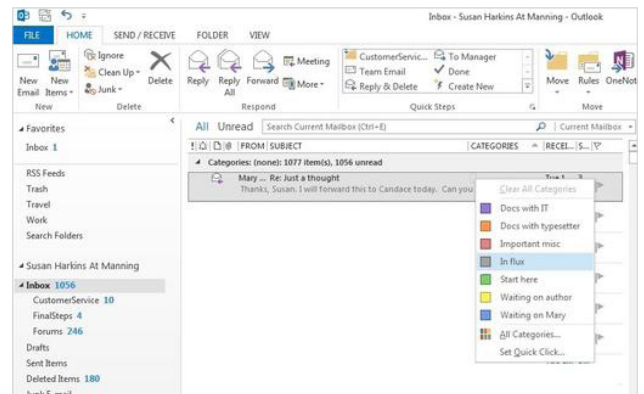
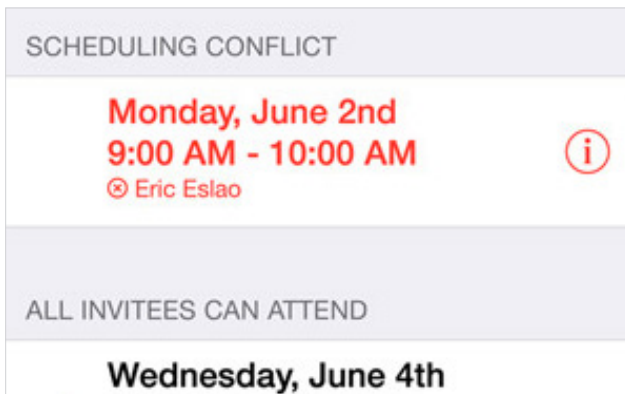
There have been numerous improvements to the Media Proxy, Java Services, JsSIP and the Screen Sharing plugin, which react to the changing WebRTC standard and its implementation in new browser versions.



## Call Forwarding

Users now have the ability to set VoIP call forwarding directly from WebClient. This is much more convenient than the cumbersome menus of a desktop IP phone.





## Availability

Apple has added enhanced availability functionality to the iOS 8 Calendar making it easier to view coworker free/busy status when scheduling meetings and, when a conflict is found, to suggest an alternative meeting time.

## Categories Sync

Categories supported by Outlook 2013 and the Nine client make it easier to find and organize your messages using colors, tags or names. These categories are synced with the server as tags and available to users in WebClient.

## SMS Sync

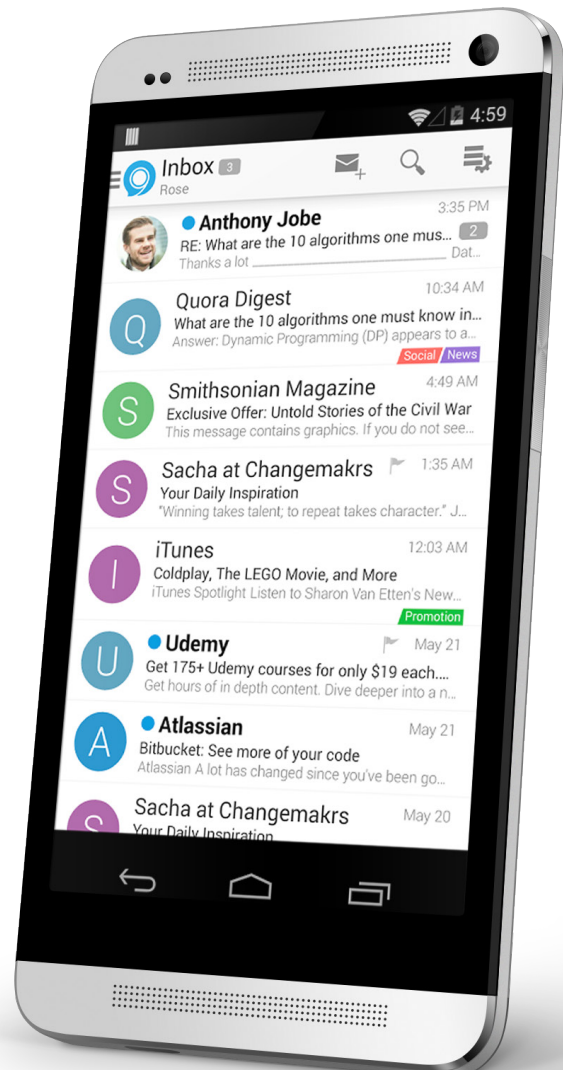
Text messages can be wirelessly viewed, created and managed from WebClient. The registered device can be used as a gateway for outbound messages. This is supported by select Samsung and LG Android phones, as well as the Nine client.

## SmartSync

SmartSync handles client malfunctions on the server side. When device rejects an event, email or contact, it is not indefinitely retried but skipped from synchronization and events/contacts are queued. The user is informed by email.

## Incremental Sync

This improves email synchronization performance mainly for Outlook and for users with large Inboxes. After the first initial synchronization, it is now possible to synchronize only changed items rather than the whole mailbox.





# Professzionális levelezés

## Nagy- és kisvállalatoknak

**IceWarp Magyarország Technológiai Központ**

6000 Kecskemét  
Hegedűs köz 2.

Tel: 06 20 / 980 44 49

**[www.icewarp.hu](http://www.icewarp.hu)**

**IceWarp®**