



IceWarp®

ICEWARP 11.1 WebRTC támogatással

Az IceWarp 11.1 új WebTelefon és WebKonferencia szolgáltatásai a legújabb WebRTC technológiára épülnek.

Használatukhoz így csak egy böngésző szükséges!

www.IceWarp.hu



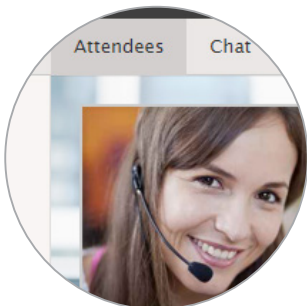
Plugin-free WebPhone

A new native VoIP client based on the latest WebRTC technology replaces the legacy Java client. The new client works on Windows/Linux/Mac with Chrome, Firefox, and Opera browsers out-of-the-box. Internet Explorer 10+ and Safari browsers require a plugin.



Video Calls

The new WebPhone now supports one-on-one video calls using your computer's web camera. A pop-up window asks attendees to confirm webcam access before a call starts.



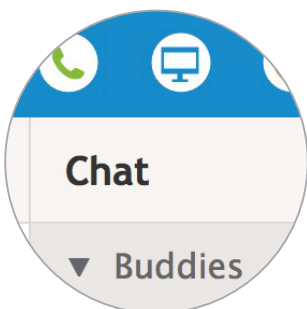
Conference Calls

Conference calls and multi-user chats are fully supported. External contacts can connect to a meeting too through one-time web access or a dial-in number.



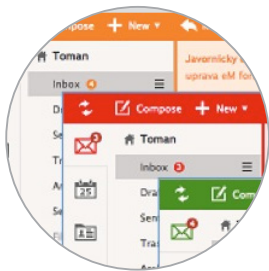
Screen Sharing

IceWarp developed a Chrome extension which uses native Chrome capabilities to support screen sharing over WebRTC. WebClient can provide the download or it's available free from Chrome web store.



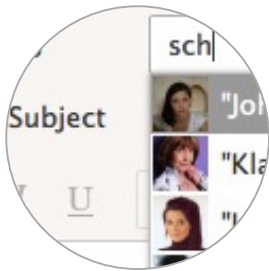
Unified IM + VoIP

The WebPhone call dialog is more integrated with chat and uses a single presence status for both chat and phone availability.



Color Themes

Customize the appearance of the WebClient login screen and interface, including menus and buttons, with one of ten different color themes to match your company's look.



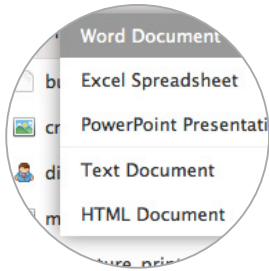
Profile Photos

As you type a name of a recipient of an email, a text message or a contact you want to dial by WebPhone, their profile photo is displayed in the address list, as well as the sender's photo in incoming email.



Presence Status

See whether a user is online when composing an email or previewing a contact. Click the status to see their contact details and take any action like sending an email, starting a chat or scheduling a meeting.



Document Preview

Preview and read Word/Excel/Powerpoint/PDF/HTML files right in the browser, without Office installed. Clicking on document preview image opens a dedicated reader window to browse, zoom and pan through the document.

Flag or Delete Without Opening

Delete or flag messages directly in the email preview line without opening them. Simply hover over a message and click the delete or flag icon.

Easy Sorting Options

Sort by Date, To, Subject and filter unread messages is available also with the email preview pane on the right.

Other Sent Folders

Other accounts can have their own 'Sent' folder. Group accounts have an improved usability of shared Sent folders setup in Options.

Dynamic Search Folders

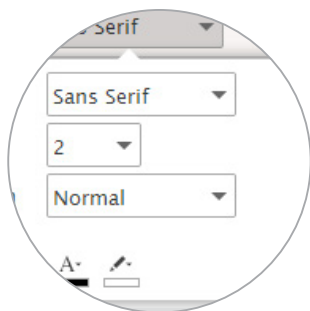
A search folder can be created for all/selected/private calendars (or other folder types) that belong to your account. If you add another (calendar) folder, it is automatically added to the new search folder.

User Profiles

Users can customize their personal contact information from My Details menu under their photo. This information then becomes visible to others in Global Address List.

Bubble Email Addresses

Email addresses in To / Cc / Bcc fields are in movable bubble format, which allows users to drag and drop recipients or remove them by clicking the x icon.



Streamlined Composing

Simplified compose window for HTML emails is less cluttered by grouping icons together, while the frequently used Priority / Encrypt / Sign toggles are always within reach.



Convert Word to HTML

When you need to edit a Word file right from your browser, click the new 'Convert Word documents to HTML' option, and then edit it directly in WebClient's rich text editor.



Voicemail Player

MP3 files like voicemails can be played directly in WebClient.



Dropbox for Tablet

Dropbox integration is also available in the Tablet interface.



Auto Bcc

A new "Bcc myself" option allows users to always Bcc copy themselves on outgoing emails.



ABQ Rules

As seen in Exchange 2010, flexible Allow/Block/Quarantine rules allow system administrators to filter mobile devices or device families based on Operating System, Device Type, and Device Model.



B.Y.O.D. Soft Wipe

Remotely delete company data from mobile devices without triggering the factory reset and deleting user's private data. The previous Remote Wipe has been renamed to Hard Wipe.



Enhanced Device Management

New Device Management dialogs include more extensive details and icons for major device platforms.



Out of Office for iOS 8

Supports the new IOS 8 ability to enable/disable an autoresponder from a device, customize the responder text, or set the end date.



Mac Integration

IceWarp Configurator is a new tool to setup OS X Mail, Messages, Calendar and Contacts immediately using information from SmartDiscover. Users are only required to enter their email & password. Supports 10.6 through 10.10 (Yosemite).



IceWarp Notifier

With the free Notifier utility for Windows, users can select files in Explorer and send them as attachments via WebClient using "Send to" - "Mail recipient" options.



Check for Updates and Auto Update

Outlook Sync can check for new versions and make them available for installation. If a user wants to update Outlook is automatically closed, Outlook Sync updated and Outlook restarted.



Hierarchical Address Book

Create a HAB with several ways to present the hierarchical folder structure in Outlook, such as numbered list, full path, or Outlook native where Outlook Sync doesn't influence the HAB.



Profile Manager

Improved ability to bind with existing Outlook profiles during initial installation. 11 different scenarios can be handled (combinations of POP, IMAP, Exchange profiles and personal folders with data).



Password Change

Support for changing an account password from Outlook Sync.

Better Email Certificate Handling

Accepted certificates are saved into the certificate store (of current user) if the certificate is not trusted. Certificates get revalidated and are removed when they expire.

User Space Installation

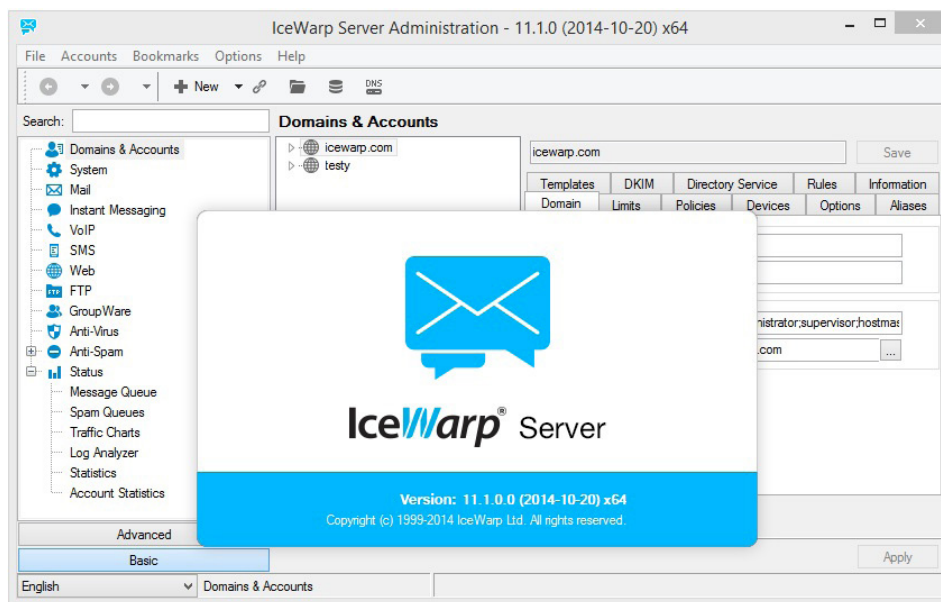
An administrator account is no longer needed to install Outlook Sync for current user only.

SSL/STARTTLS Support

TLS security is supported for SMTP, IMAP, installer and settings in a profile.

Speed Optimization

Improved speed of the initial sync.



Refreshed Overall Look & Feel

Major improvements have been made to the administration console layout, node rearrangements and toolbar improvements, along with a set of fresh new icons.

150+ Small Modifications

There are many usability enhancements and fixes originating from feature requests submitted by customers. For example, the currently logged in user is now shown in remote console's window title.

Anti-Virus Rejection Message

There is now a custom error for rejection due to blocked file extension in the SMTP response and logs. The sender and recipients are logged.

VoIP SIP Server Improvements

Reorganized console settings, new libsrtp and media proxy for WebRTC.

AD Sync and LDAP

Improvements for better compatibility with Active Directory.

SHA-256 Cryptography

Increased default key size to 3024 bits, which allows for stronger SSL certificates and CSR requests. Mozilla and Google announced that they would begin rejecting the weaker SHA-1 SSL certificates issued today expiring after 2016.

Disable All Admin Options

Optionally hide all system options from an administrator account and enable only selected dialogs, for example to create a limited administrative account that can be used solely for password management.

Limit Parallel SMTP Connections

Added an option to set Maximum number of parallel connection in Intrusion Prevention settings.

IPv6 Full Compatibility

The server has been reviewed for IPv6 support.

New PHP 5.4 Engine

Upgraded version of PHP which receives regular security fixes.



PROFESSZIONÁLIS LEVELEZÉS NAGY- ÉS KISVÁLLALATOKNAK

IceWarp®

IceWarp Magyarország Technológiai Központ

6000 Kecskemét
Hegedűs köz 2.

Tel: 06 20 / 980 44 49

www.IceWarp.hu