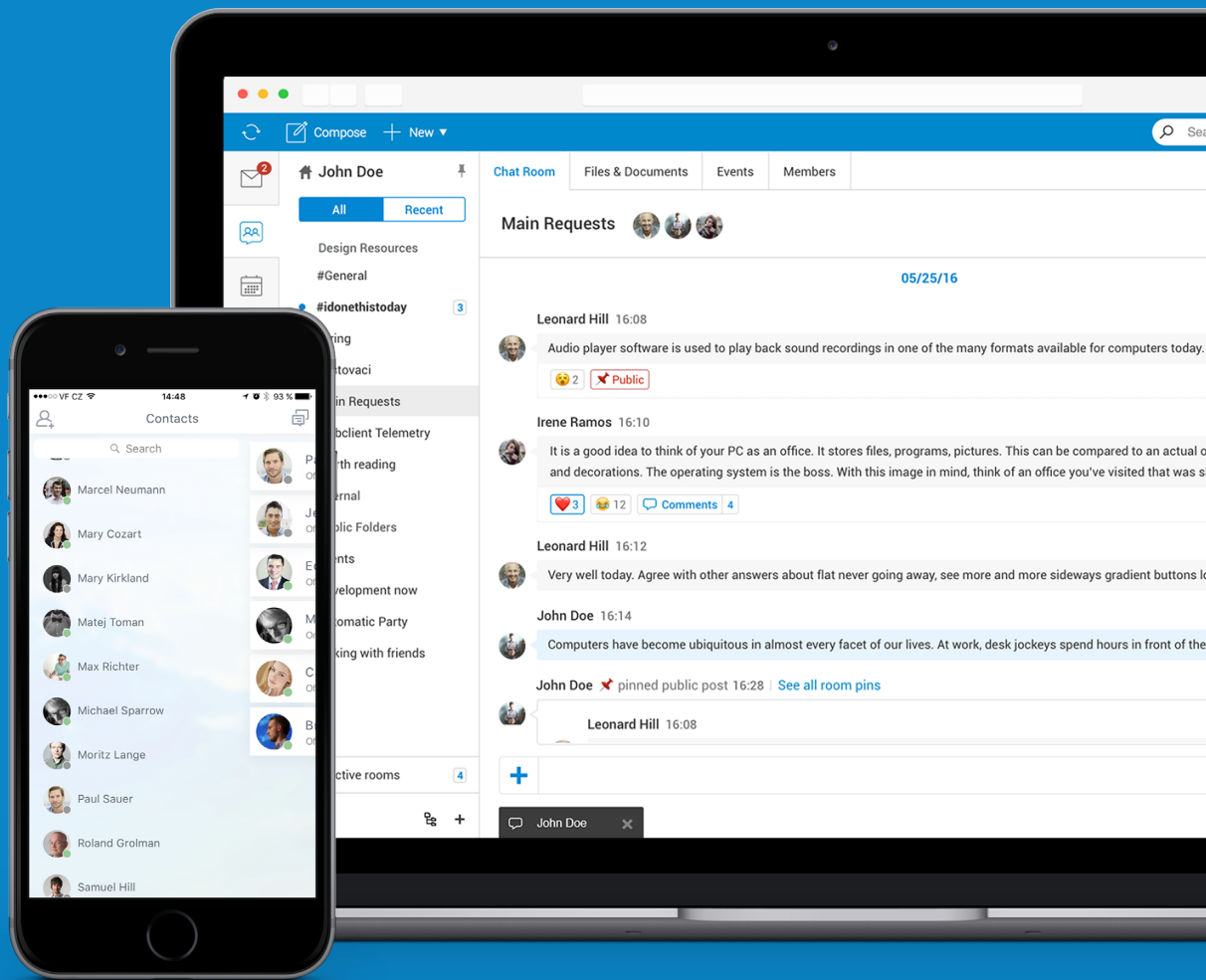


# IceWarp Szerver 12

a közös munkavégzés előnyeivel

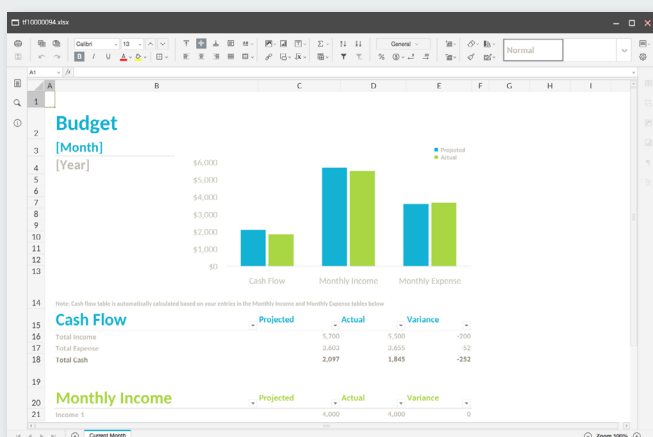
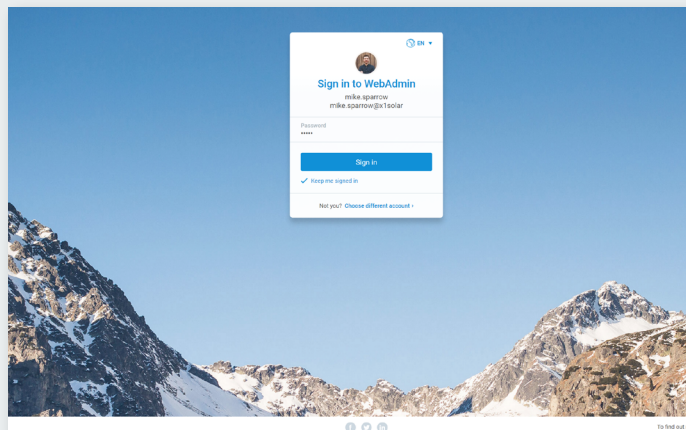
## Adminisztrátoroknak



Az IceWarp új generációja jelent sen segíti a csoportok közös munkavégzését és radikálisan leegyszer sítí az online információcserét. A teljesen új IceWarp alkalmazásokal és az optimalizát webes felülettel a felhasználók e-mailjeik mellett bármikor hozzáférhetnek dokumentumjaikhoz és egy közös környezetben dolgozhatnak azokon.

## New Login Screen

The release of version 12 introduced the new login page. Login screen is the same for both WebClient and WebAdmin, and also the settings are shared. Compared to the previous version, it is completely generated by JavaScript (browsers without JavaScript support will be redirected to the old „Tablet“ login screen). The redesigned login page provides better login assistance and troubleshooting tools and allows greater flexibility for new features, such as two-factor authentication, custom sign-up fields and more.



## WebDocuments

The new web-based document editing technology in the IceWarp Server allows users to create, view and edit documents in most common Office formats, now available with the full set of editing tools. To benefit from these features, customers on older versions of WebDocuments (with IceWarp Server 11.4) will have to upgrade their IceWarp Server to version 12.x and install a new WebDocuments Server. WebDocuments access can be set on user and domain level and is also displayed as a service within the Collaboration section in IceWarp Server administration.

## Cloud instance

With the release of IceWarp Server 12 we also started offering this as a cloud-based solution. This can be deployed in our geographically dispersed and independent datacenters located in the USA, Germany or Czech Republic. Data among datacenters are replicated in real-time. Cloud account details can be managed directly from the new „Subscription“ tab in WebAdmin and additional cloud-related account information is also displayed in the WebAdmin dashboard.

+

SUBSCRIPTION

CURRENT PLAN

Plan details

Storage per user

5 kB

Price per user/month

€5.00

Active users

29

Price per all users/month

€145.00

✓

Simple

€5.00

per user/month

CHANGE PLAN

PAYMENTS

Payment details

Card details

CARD NUMBER

\*\*\*\* \* 1111

EXPIRATION DATE

2018/12/01

CHANGE DETAILS

Subscription details

Cluster

Prague - Europe

Next billing

2017/03/01

Any questions?

+420 222 55 11 51

obchod@icewarp.cz

Last invoices

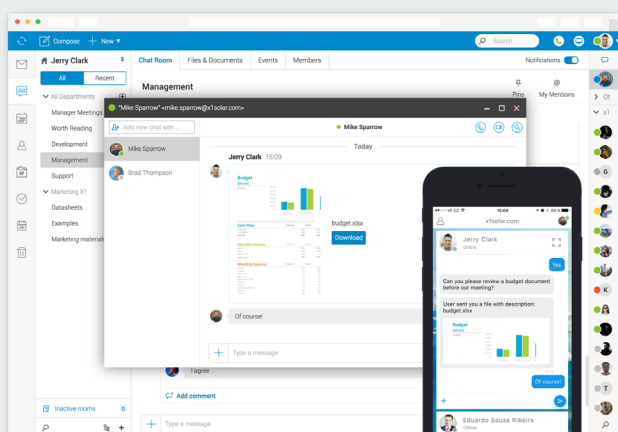
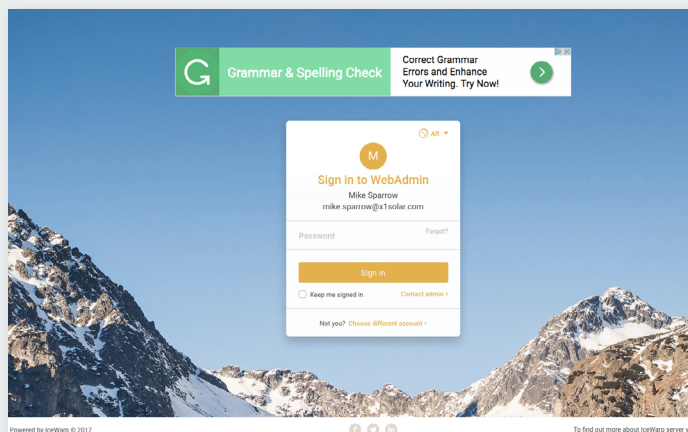
SHOW INVOICE LIST

1899/12/30

1899/12/30

## Banner Ads

Since version 12, IceWarp Supports Google AdSense. It allows typically Internet Service Providers and others display banner ads on the login screen and inside the WebClient (at the bottom of the instant messaging contact list and on top of WebClient interface). Administrator can select from static image by placing image URL or AdSense by placing AdSense slot ID provided by the AdSense provider.

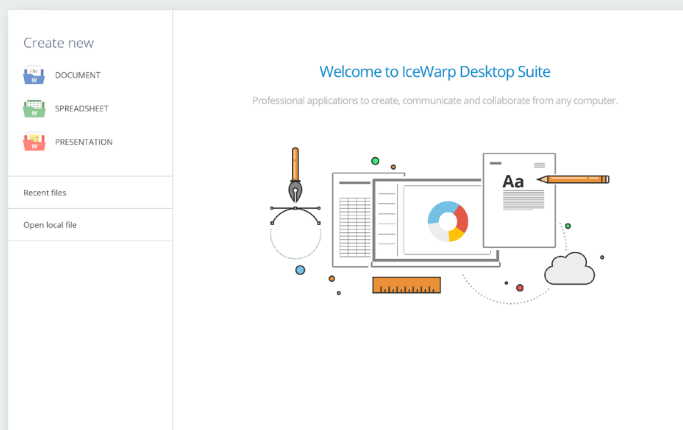


## IceWarp Apps

IceWarp Server 12 introduces our own new family of apps, simplifying users' mutual communication across devices. IceChat for iOS, FileSync and TeamChat Desktop utilize the AutoDiscover service to automatically configure the server connection, so users need to just sign in with their username and password. Our apps use protocols: IceChat for iOS – XMPP over WebSockets (HTTPS), FileSync – WebDAV, WebSockets and TeamChat Desktop – HTTPS. HTTP / HTTPS must be enabled for the correct functionality of the client applications. AutoDiscover should also be correctly configured.

## IceWarp Desktop Suite

A complete office suite is now available for Windows, including Desktop Client, Desktop Documents, Desktop Spreadsheets and Desktop Presentations (Mac version coming soon). Users can easily work with email, calendar, contacts, or use native applications to create, view and edit documents. The Desktop Suite can be purchased for any number of users, starting at the minimum of 5.



## ACL for TeamChat folders

The Permission dialog for TeamChat in the Administration Console was updated. The list of permissions was extended so administrators can now set up the following TeamChatrights: Read, Write, Owner, All, Full, None, Custom, Kick and Invite.

## HELO/EHLO vs Auth.

The HELO/EHLO filter is now considering the AUTH command. The filter can be used to block incoming connections from specific servers even if it is an authenticated relay.

## TeamChat Plugins

Server administrators can easily connect TeamChat with other apps via third party integrations.

## TeamChat API

The TeamChat platform is fully prepared to integrate with the third party applications using its Application Programming Interface, offering extended functionality for teams.

## Microsoft Server 2016

IceWarp Server 12 now officially supports Microsoft Server 2016.

### New Apps for Computers and Smartphones



Desktop Suite



TeamChat



FileSync



IceChat