

602 Server to IceWarp Migration

Version 10



Contents

| | |
|--|----------|
| Software 602 Server to IceWarp Server Migration | 1 |
| About..... | 2 |
| Prerequisites | 2 |
| Recommendations | 2 |
| Migration Process..... | 3 |
| License Purchase | 8 |

CHAPTER 1

Software 602 Server to IceWarp Server Migration

This document describes the process of migration from Software 602 Server or LANSuite Server to IceWarp Server as well as purchase of the LIVE IceWarp license.

In This Chapter

| | |
|-------------------------|---|
| About | 2 |
| Migration Process | 3 |
| License Purchase | 8 |

About

Prerequisites

Prior to the migration you need the following:

- IceWarp Server Version 10 installation file – download from <http://www.icewarp.com/downloads/server/>
- IceWarp Migration Utility 10.1.0 – download from <http://www.icewarp.com/download/migrator/>
- If you want to migrate from LANSuite Server, you need to have .NET Framework installed. (For Software 602 Server, you have .NET Framework installed.)
- Assure that you have enough hard drive space available.

Recommendations

Do not install an IceWarp Server trial version before running IceWarp Migration Utility as a trial license generated by this utility includes a real number of originally licensed users in your Software 602 product. Usual trial licence is issued for 15 users only.

Do not put LIVE license purchase aside to the very last day of a 30-day trial period as migration of a server with a real number of users can take some time. Migration would be interrupted in the case a trial version has expired.

NOTE that initial purchase of the migrated license allows you to buy just those modules and number of users, which are equivalent to the original Software 602 Server license.

Should you need to extend number of licensed users or purchase additional modules, you can do that any time later via the same update process.

Migration Process

Migration from Software 602 Groupware or LANSuite to IceWarp Server

1. Launch IceWarp Migration Utility 10.1.0. The **Welcome** page opens.

Click the **Next** button.

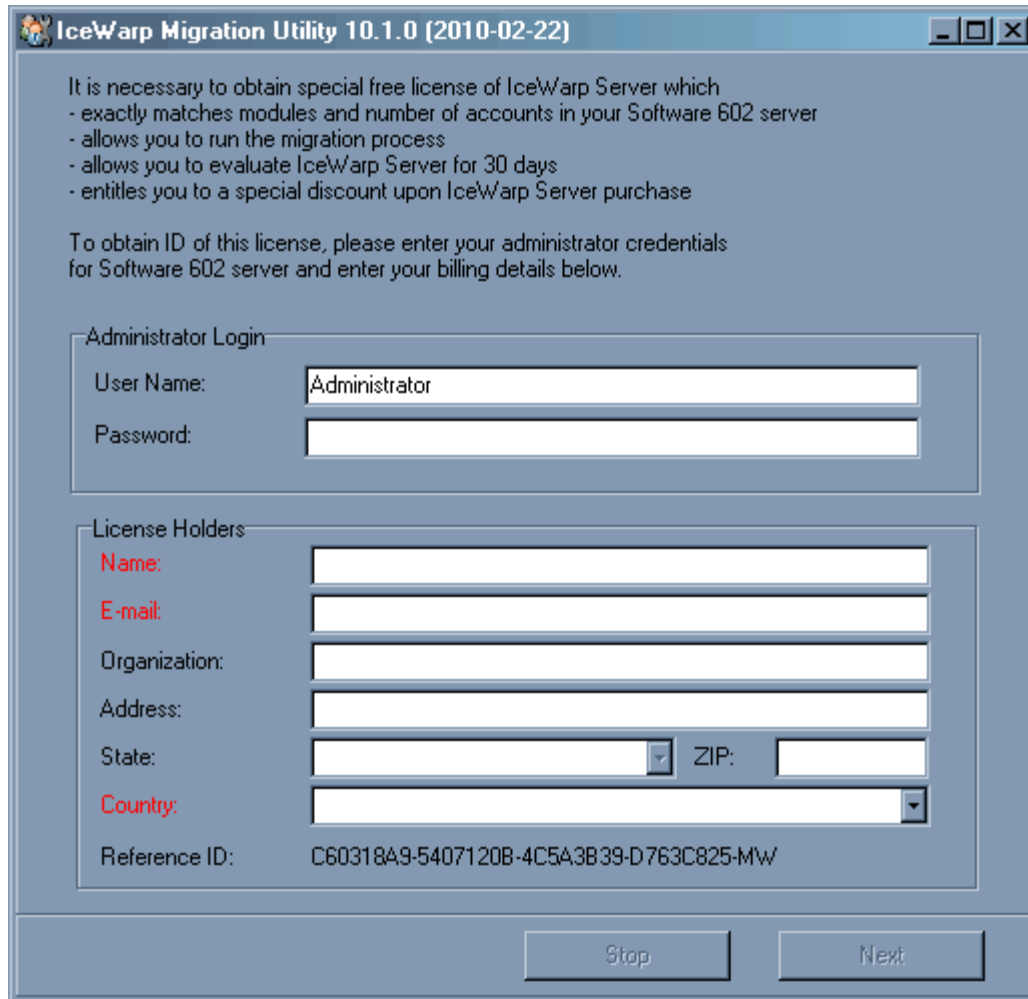


2. In the **Administrator Login** section of the **License** screen, fill in the **User Name** and **Password** for your Software 602 Server.

In the **Licence Details** section fill in information about your organization. The **Name**, **E-mail** and **Country** fields are mandatory, the others are optional.

NOTE that obtained trial license will have the same parameters (number of users, allowed modules etc.) as your Software 602 Server license has.

Click the **Next** button.



IceWarp Migration Utility 10.1.0 (2010-02-22)

It is necessary to obtain special free license of IceWarp Server which

- exactly matches modules and number of accounts in your Software 602 server
- allows you to run the migration process
- allows you to evaluate IceWarp Server for 30 days
- entitles you to a special discount upon IceWarp Server purchase

To obtain ID of this license, please enter your administrator credentials for Software 602 server and enter your billing details below.

Administrator Login

User Name:

Password:

License Holders

Name:

E-mail:

Organization:

Address:

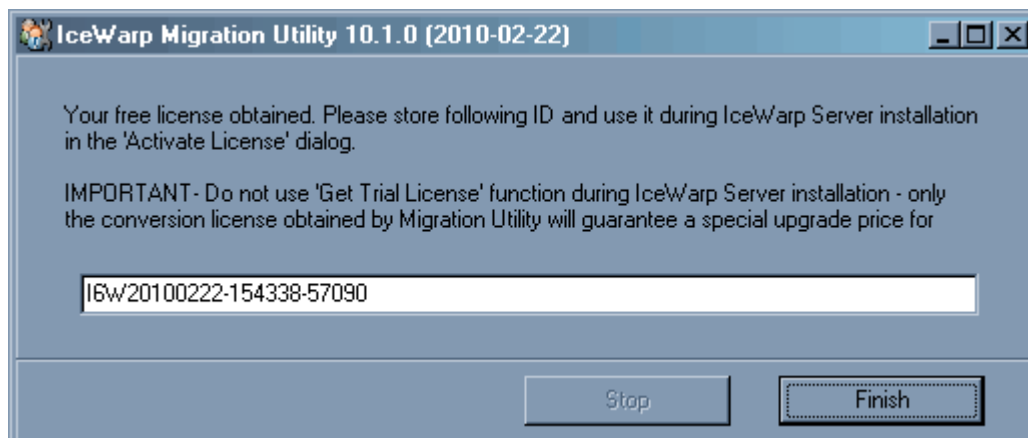
State: ZIP:

Country:

Reference ID: C60318A9-5407120B-4C5A3B39-D763C825-MW

3. The **Order ID** screen shows the order ID of your trial license.

Please store this order ID for further processing and possibility to obtain discounted version of IceWarp Server.



IceWarp Migration Utility 10.1.0 (2010-02-22)

Your free license obtained. Please store following ID and use it during IceWarp Server installation in the 'Activate License' dialog.

IMPORTANT - Do not use 'Get Trial License' function during IceWarp Server installation - only the conversion license obtained by Migration Utility will guarantee a special upgrade price for

4. Close IceWarp Migration Utility and launch the IceWarp Server installation file.

For details about IceWarp Server installation, refer to the **V10 Installation Guide** (available here:

<http://www.icewarp.com/downloads/documentation/server/>

<http://www.icewarp.com/downloads/documentation/server/>).

On the **Online Activation** tab (**Setup Type** page – **Activate License** button – **License** dialog), enter your **Order ID** obtained within IceWarp Migration Utility.

Follow the **V10 Installation Guide** to finish IceWarp Server installation.

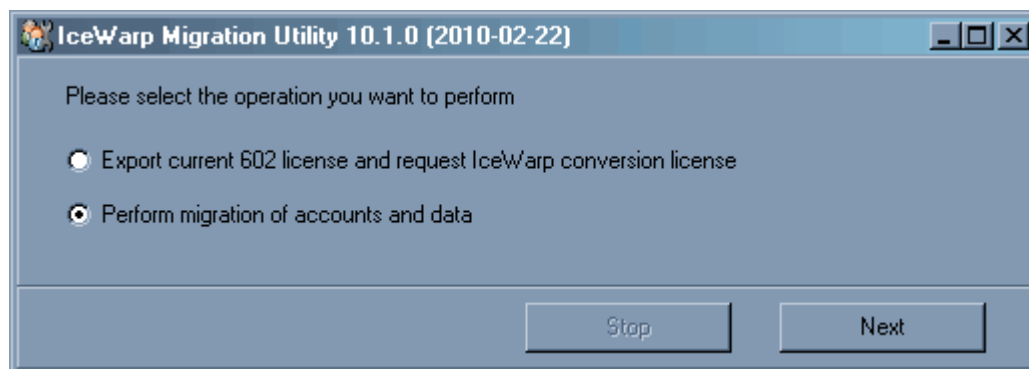
5. Launch IceWarp Migration Utility again.

On the **Select Operation** screen, select from two options:

- **Export current 602 license and request IceWarp conversion license** – select this option if you have lost your **Order ID** and want to obtain the conversion license again. Click the **Next** button.

The **License** screen (see step 2) is displayed again in this case. After entering the needed data, go through step 3 and continue to step 6.

- **Perform migration of accounts and data** – select this option if you are ready to migrate (selected by default).



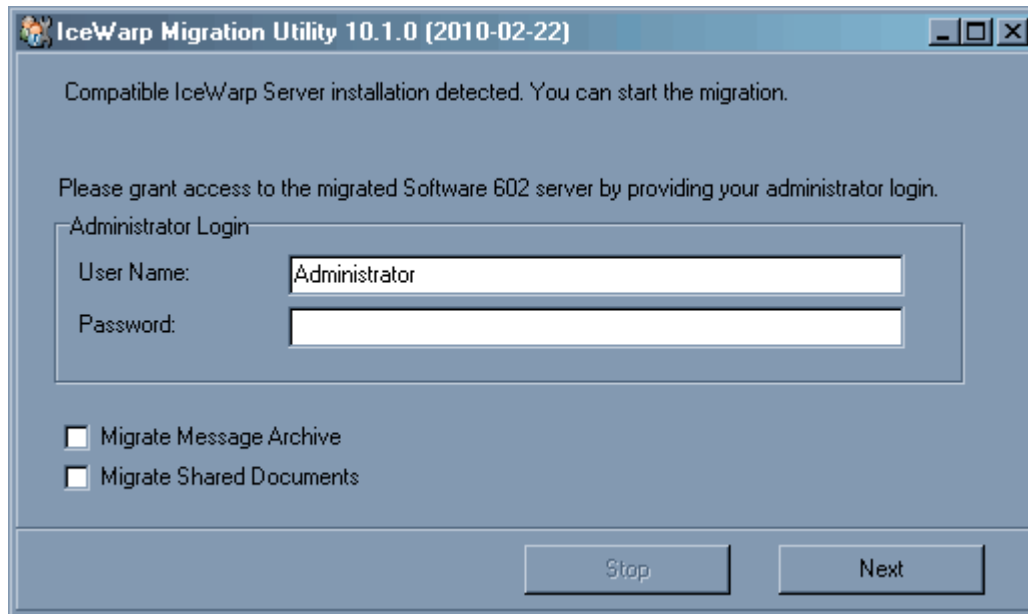
The next displayed page will announce detection of installed Icewarp Server.

Enter credentials for your Software 602 Server again.

NOTE that a password is not needed if you migrate from Software 602 LANSuite.

Select whether you want to migrate a message archive and/or shared documents.

Click the **Next** button.



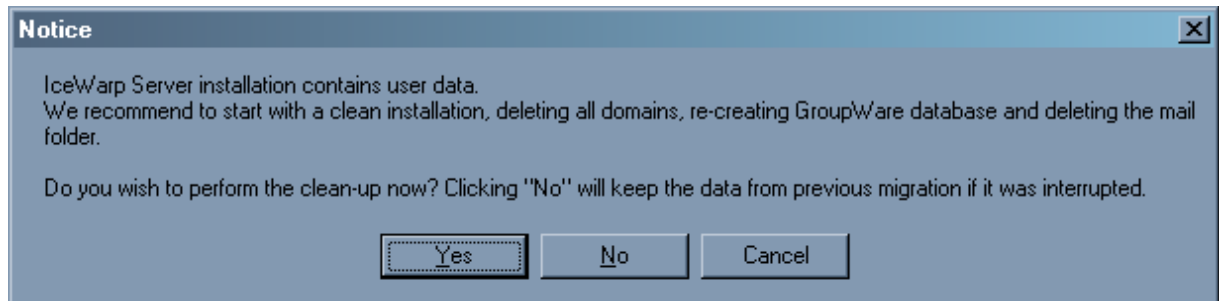
The dialog box is titled "IceWarp Migration Utility 10.1.0 (2010-02-22)". It contains the following text and controls:

- Text: "Compatible IceWarp Server installation detected. You can start the migration."
- Text: "Please grant access to the migrated Software 602 server by providing your administrator login."
- Section: "Administrator Login" with a sub-label "Administrator Login".
- Form fields: "User Name:" with the value "Administrator" and "Password:" with an empty field.
- Checkboxes: ☐ "Migrate Message Archive" and ☐ "Migrate Shared Documents".
- Buttons: "Stop" and "Next".

6. In the case Migration Utility detects data within your IceWarp Server installation, it will ask you if you wish to remove them.

Click **Yes**, if you just have tried to create some dummy accounts etc.

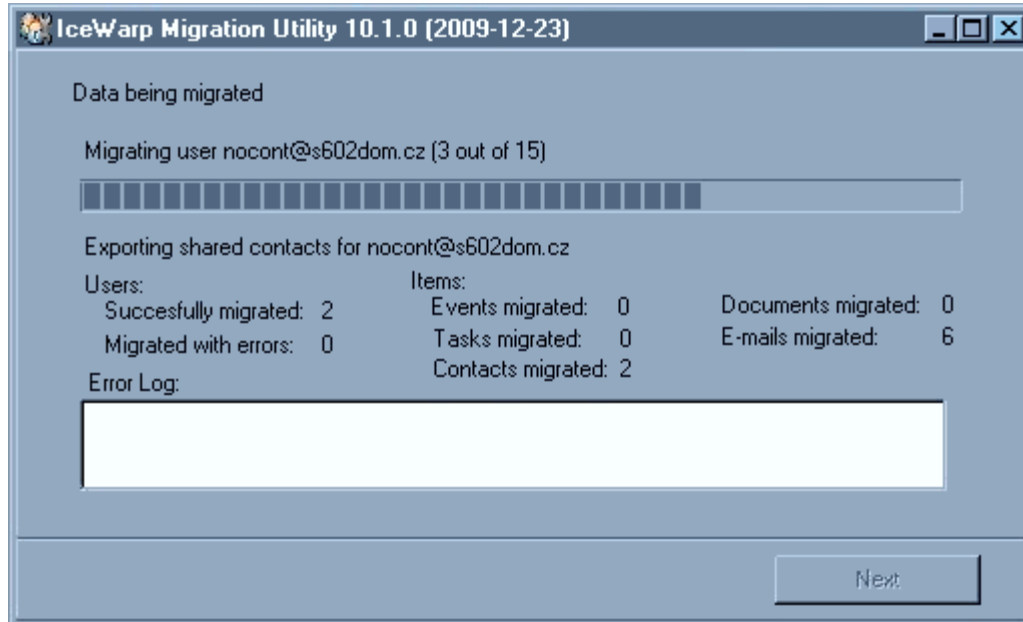
Click **No**, if you wish to keep data from previous (maybe interrupted) migration.



The dialog box is titled "Notice" and contains the following text and controls:

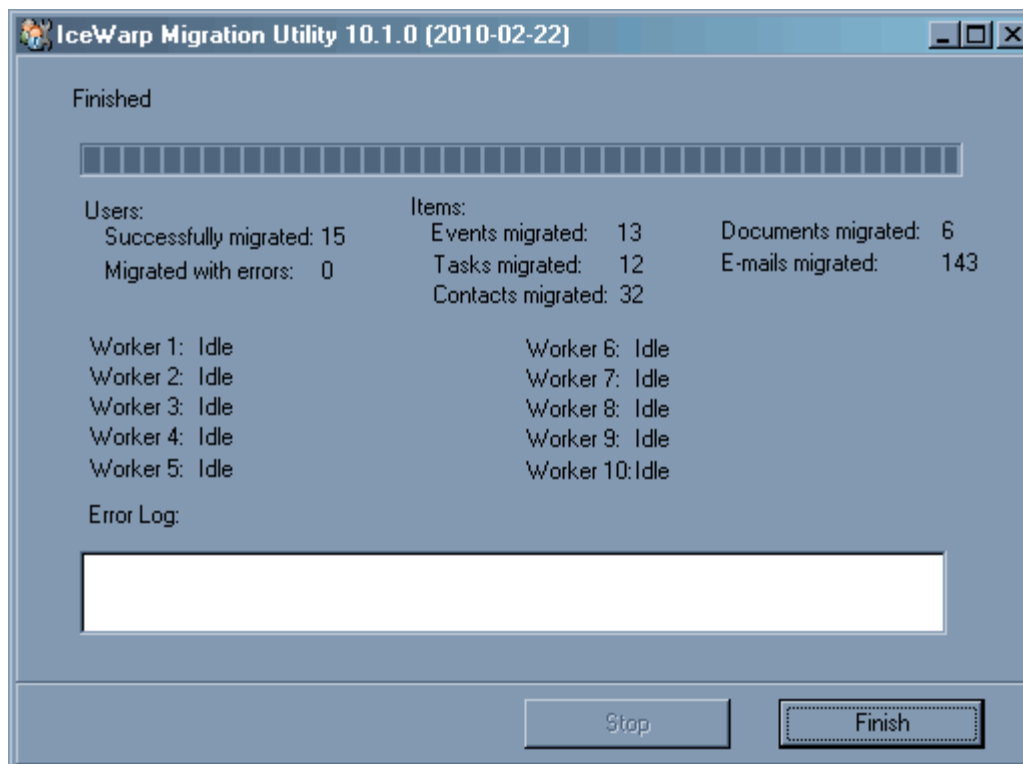
- Text: "IceWarp Server installation contains user data. We recommend to start with a clean installation, deleting all domains, re-creating GroupWare database and deleting the mail folder."
- Text: "Do you wish to perform the clean-up now? Clicking 'No' will keep the data from previous migration if it was interrupted."
- Buttons: "Yes", "No", and "Cancel".

7. You can see migration progress on the next screen. Migration Utility informs you about migrated items in real time.



8. After successful migration, the tool shows numbers of processed items.

You can close the tool by clicking the **Finish** button. From this moment, IceWarp Server is ready for production use.



License Purchase

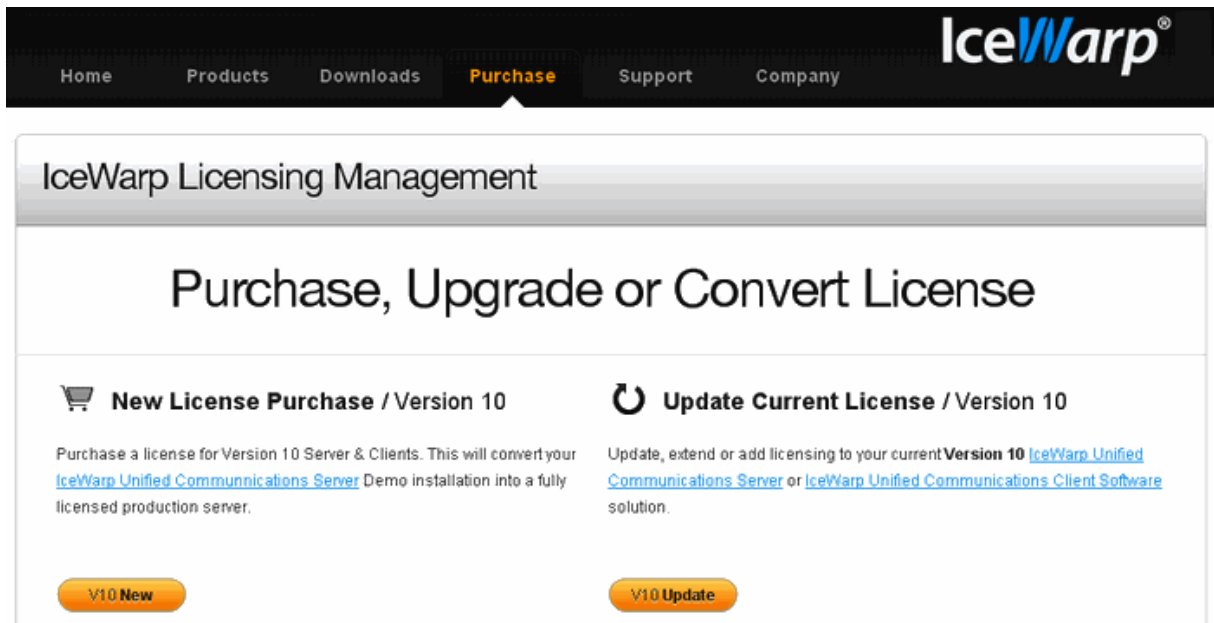
Once you have migrated your server to IceWarp Server, your original Software 602 Server license has been converted into 30-day trial full-featured IceWarp Server license with the same number of users.

Trial license order ID always starts with the **I6W** prefix. E. g.: I6W20100127-161524-57167.

To purchase a LIVE license, follow these steps:

1. Go to the **www.icewarp.com/purchase** www.icewarp.com/purchase – **Update Current License / Version 10** section. Click the **V10 Update** button.

You are directed to **https://shop.icewarp.com/purchase/update_v10.php**
https://shop.icewarp.com/purchase/update_v10.php.



2. On the **Current Licence** page, select the **Enter Order ID** option and enter the trial license order ID, that you obtained during server migration, to the **Order ID** field. It is I6W20100127-161524-57167 in this case.

Click the **Next** button.

Current License

Upload the license.xml file from your Icewarp server or enter the order ID from your current license in order to renew your maintenance, add new modules or add new users to your existing license.



☐ Upload License.xml File

☒ Enter Order ID

Currently, this option **only works for new order IDs** starting with **'USA', 'EUR', 'IC9', 'I6W'** or **'TRL'**.

Order ID

Next

3. The next page summarizes the license and shows the list of products that you will obtain within this license. Total license price is calculated here – the migration discount for Software 602 customers is taken into account.

Continue in your purchase.

| | | | |
|------------------------------|----|-----|------|
| Anti-Virus | 30 | 365 | LIVE |
| Anti-Spam | 30 | 365 | LIVE |
| Anti-Spam Live | 30 | 365 | LIVE |
| Log Analyzer (Free) | 30 | 7 | DEMO |
| CalDAV Server (Free) | 30 | 365 | LIVE |
| FTP Server (Free) | 30 | 365 | LIVE |
| Migration Tool (Free) | 30 | 365 | LIVE |
| Web Server (Free) | 30 | 365 | LIVE |

| 3. Collaboration & Mobility | New License | | |
|--|-------------|------------|------|
| Add-On any number of users for any Collaboration and Mobility feature below. | | | |
| Note: Price per user will decrease significantly as the number of users selected is increased. | | | |
| ActiveSync, SyncML and the IceWarp Outlook Connector require the equivalent number of Groupware licenses and the number of users will be adjusted accordingly. | | | |
| | Users | Expiration | Type |
| GroupWare - Shared Contacts, Calendars, Tasks, Notes and mobile PIM | 30 | 365 | LIVE |
| Instant Messaging - secured chat with conection to ICQ, AOL, MSN, Facebook, etc. | 30 | 365 | LIVE |
| SIP - Internet VOIP telephony with gateway for PSTN | 10 | 7 | DEMO |
| SMS - Send/Recieve text messages to/from cell phones | 10 | 7 | DEMO |
| SyncML - Over-air GroupWare data synchronization with mobile phones (Sony, Motorola, etc.) | 10 | 7 | DEMO |
| Microsof Exchange Active Sync - native synchronization for iPhone, Windows Mobile, Nokia, etc. | 10 | 7 | DEMO |
| Outlook Connector | 30 | 365 | LIVE |

| | Maintenance Days | Price |
|---|------------------|-----------------|
| Current Users Maintenance Renewal | 365 | \$720.70 |
| Total | 365 | \$720.70 |
|  | | |

4. Provide all information needed, select the way of payment you prefer etc.

| License Holder Information | | | |
|---|-----------------------------------|--------------|--------------------|
| 2. Communication & Security | Type | Users | Maintenance |
| ➔ Professional Mail Server Engine, Unlimited Domains | LIVE | 30 | 365 |
| ➔ WebMail Pro and WebMail Basic | LIVE | 30 | 365 |
| ➔ Anti-Virus Module | LIVE | 30 | 365 |
| ➔ Anti-Spam Module | LIVE | 30 | 365 |
| ➔ Anti-Spam Live | LIVE | 30 | 365 |
| ➔ Mail Log Analyzer | DEMO | 30 | 7 |
| ➔ CalDAV Server for GroupWare | LIVE | 30 | 365 |
| ➔ FTP Server Module | LIVE | 30 | 365 |
| ➔ Migration Tool | LIVE | 30 | 365 |
| ➔ Web Server | LIVE | 30 | 365 |
| 3. Collaboration & Mobility | Type | Users | Maintenance |
| ➔ GroupWare Server, Shared Calendars, Tasks, Notes, Contacts | LIVE | 30 | 365 |
| ➔ Instant Messaging Server, Transport to MSN, AOL, Yahoo, ICQ, GoogleTalk | LIVE | 30 | 365 |
| ➔ VoIP Telephony Server | DEMO | 10 | 7 |
| ➔ SMS Server | DEMO | 10 | 7 |
| ➔ SyncML Server for GroupWare | DEMO | 10 | 7 |
| ➔ Microsoft Exchange Active Sync Server for Groupware | DEMO | 10 | 7 |
| ➔ GroupWare Outlook Connector | LIVE | 30 | 365 |
| Your Price | \$720.70 | | |
| If you have obtained a discount code you may apply it here | <input type="text"/> | | |
| <p>This license will be released and licensed to the customer specified below and registration details delivered by e-mail. All customer information submitted to us is considered strictly confidential and will be used for internal technical & sales support related issues only. This information will never be released or sold to any 3rd party.</p> | | | |
| Enter License Holder Information | | | |
| Customer Order# | <input type="text"/> | | |
| Licensed To | Contact Name <input type="text"/> | | |
| Business Type | <input type="text"/> | | |

5. After payment, you will obtain the LIVE license order ID.

In the IceWarp Server administration console, select the **Help – Licenses** menu items. In the **License** dialog, click the **Activate License** button. On the **Online Activation** tab, insert your order ID. Click **OK** in both dialogs.

